

PMST WAVE

PHYSIO MAGNETO (PMST WAVE)

Magneto+shockwave+infrared Therapy Machine

User Manual



Attention

Respected user:

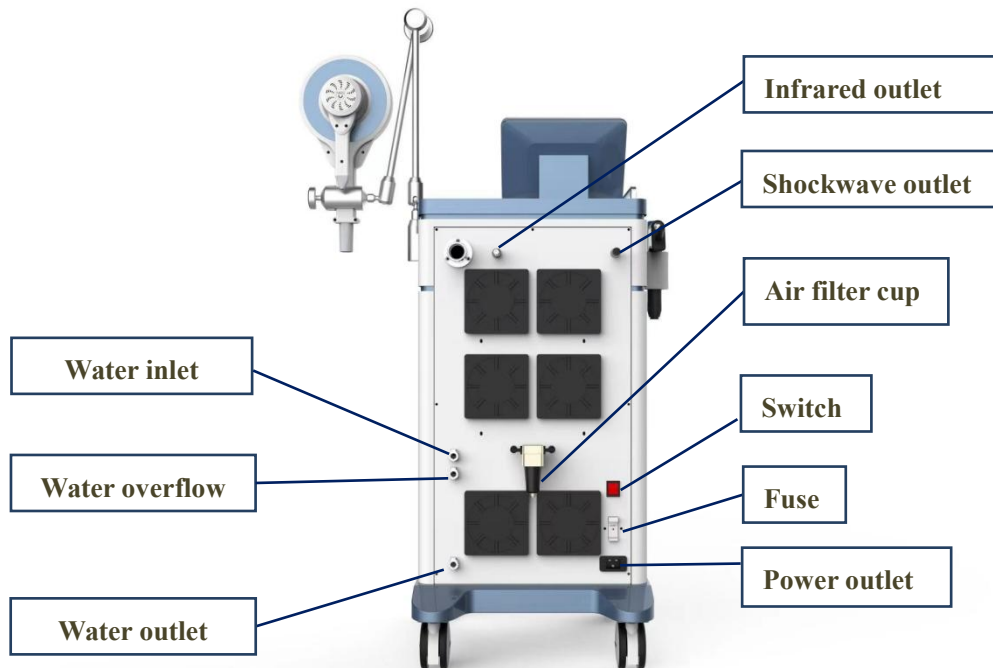
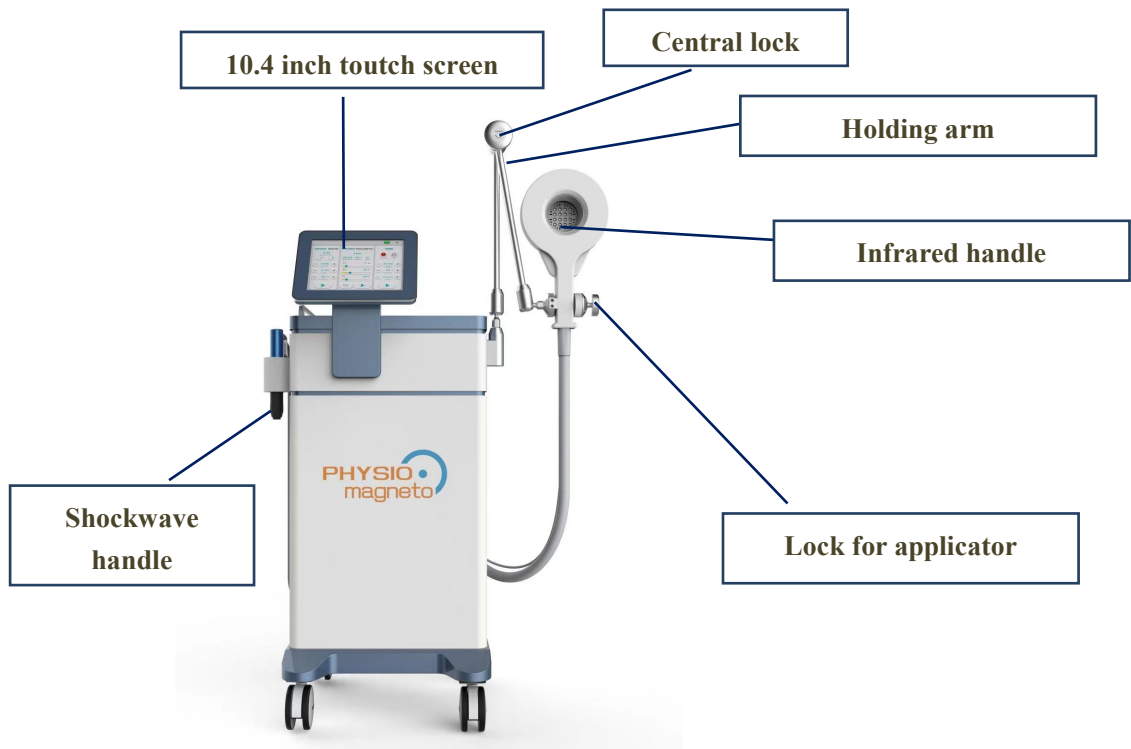
Thank you for choosing the instruments which carefully designed and manufactured by our company.

In order to better utilize the product, we sincerely recommend:

- ◆◆ Please read this manual carefully before using the instrument.
- ◆◆ Please install, use and operate correctly according to the requirements in the manual.
- ◆◆ Do not disassemble or modify any parts of this machine.
- ◆◆ Except for authorized personnel of the company, it is strictly forbidden to open the cover and disassemble the host.
- ◆◆ Non-professionals are strictly forbidden to carry out repairs and renovations.
- ◆◆ If there is any malfunction during the operation, please contact us.

Notice : Please read this manual carefully before operating this machine.

Chapter 1 Parts introduction



PMST WAVE

1. Install the shockwave handle, infrared handle, holding arm and magneto applicator (Please follow the video)

Notice 1: Before we install or remove the handles, we need to turn off the machine.

Notice 2: If we have secured the holding arm, we cannot move it. Otherwise, it is easily damaged. If we want to move it, we must loosen the central lock firstly.

Notice 3: The direction of the notch of the holding arm is the direction of the movement of the holding arm.

2. Add water into the machine (Please follow the video)

Notice 1: After adding water into the machine, we need to change the water every two weeks. The aim is to maintain the water cooling system. Drain away the water first and then add water again. And the water should be distilled or purified water.

Question: Why should I add water into the machine?

Answer: Because the machine adopts water-cooled system and before the delivery we will drain away water to avoid the water coming out during the international transportation. So if you need to move it to a far workplace, you also need to drain away water in the machine and put it into the aluminum box with foam for protection.

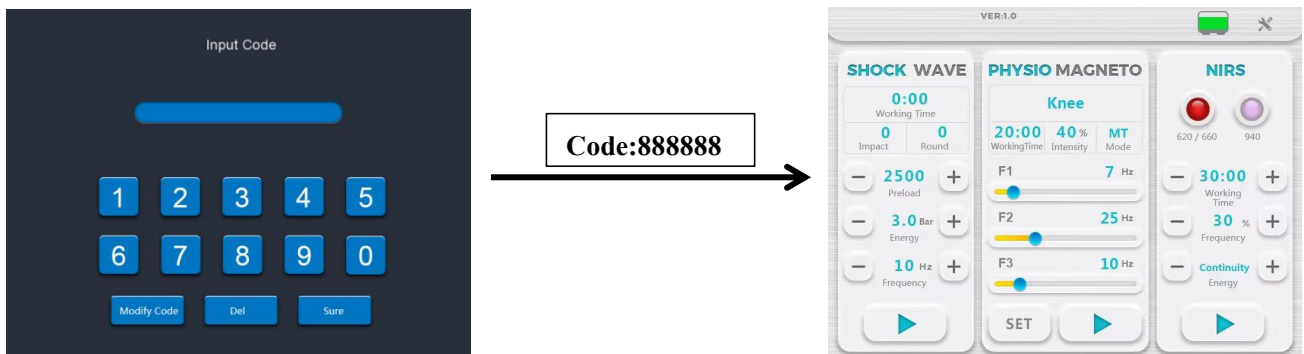
Question: What kind of water should I add into the machine and why?

Answer: Distilled water or purified water because there is no waste in such water. The waste of the normal water may produce incrustation and damage the water-cooled system.

Question: What is the advantage of water-cooled system?

Answer: Compared with the air-cooled system, water-cooled system has higher efficiency in heat dissipation. So it can be used for around 8 hours continuously without energy loss.

Chapter 3 Three therapies and the operation



Magneto Therapy

1. Typical indications

◆ Degenerative joint diseases

Signs of wear and tear, e.g. arthrosis (knee, hip, hands, shoulder, elbow), herniated disc, spondylarthrosis.

◆ Pain therapy

(Chronic) pain, e.g. back pain, lumbalgia, tension, radiculopathies, heel pain.

◆ Sport injuries

(Chronic) inflammation of tendons and joints, tendon overload syndrome, osteitis pubis.

2. Things need to notice before the treatment

◆ If there is only a pure metal object in the vicinity of the treatment site, vibration and heat will occur depending on the distance of the metal object.

◆ If there is an implanted circuit in the body, such as a pacemaker, or other circuit device. Strong magnetic fields can cause power failures or damage internal chips.

◆ ID cards, car keys, access cards, and other wireless devices near the magnetic ring will be damaged.

PMST WAVE

Question: Which side is the treatment side?

Answer: The white side and the inner wall is the treatment side. The customers can place their joints into the circle structure.

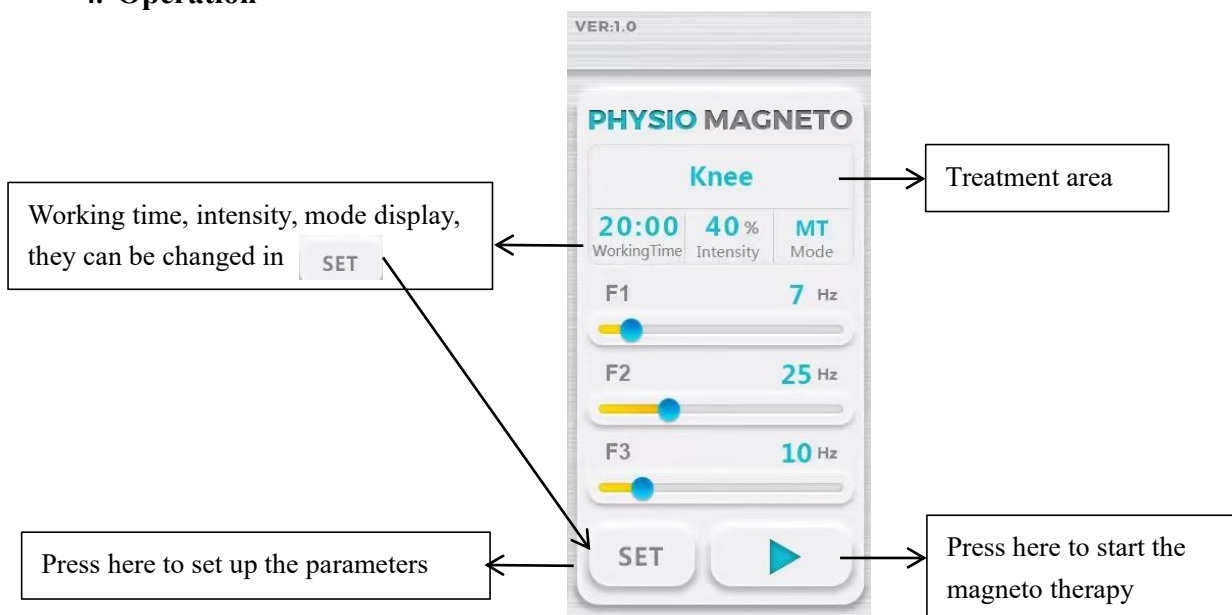
Question: Could I take out the applicator from the lock and do a manual work?

Answer: Yes. You can do a manual work to cover a larger treatment area.

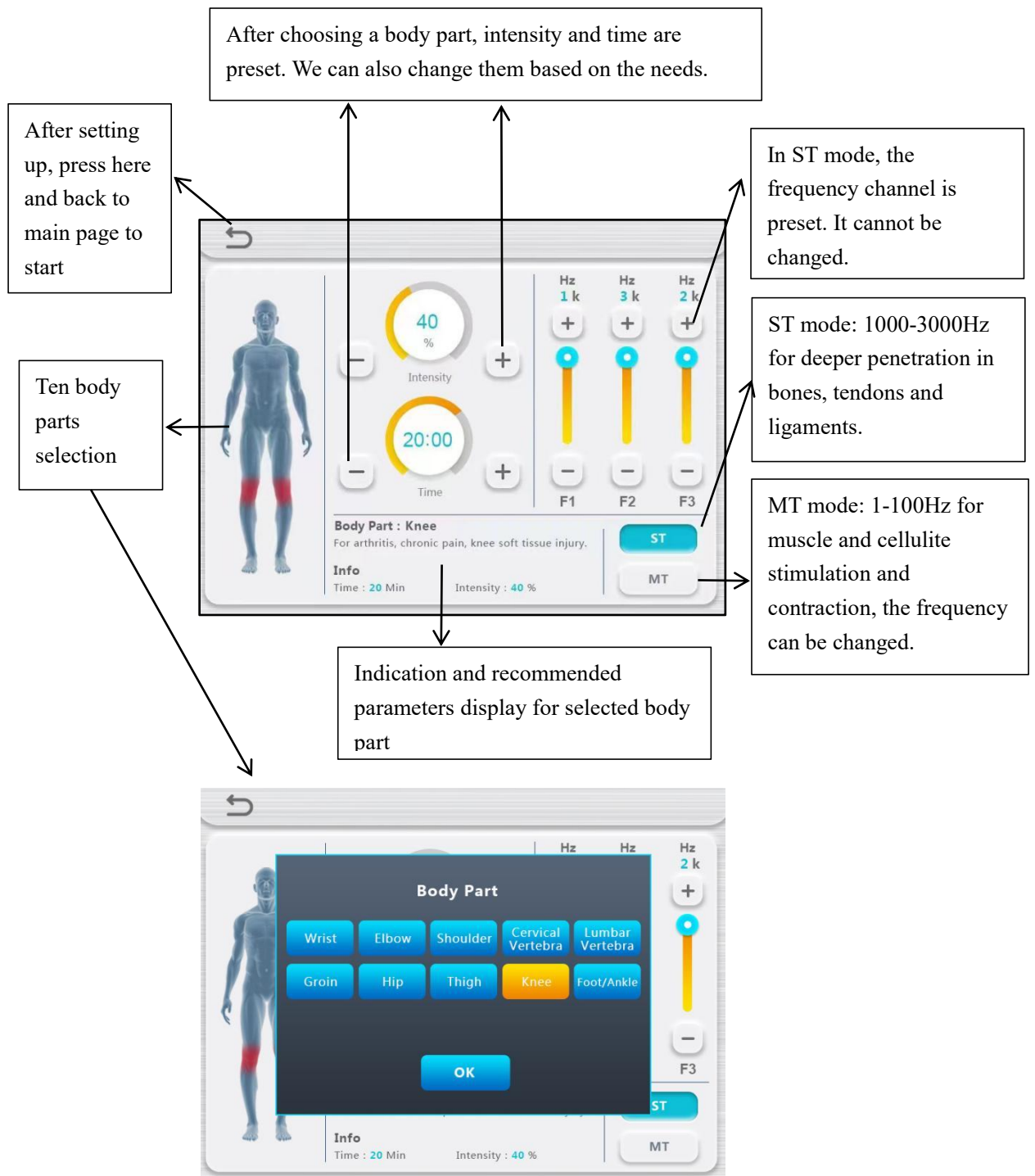
3. Contraindiction

- ◆ Vascular diseases present in or near the treatment area
- ◆ Local infections in the treatment area
- ◆ Around malignant or benign tumours
- ◆ Directly over implanted electronic devices such as pacemakers, analgesic pumps, etc
- ◆ In areas, in which mechanical energy in the form of vibrations may lead to tissue damage such as metal implants after a fracture

4. Operation



PMST WAVE



- 1) Loosen the central lock.
- 2) Move the holding arm and position the magneto applicator above the treatment area.
- 3) Secure the holding arm
- 4) Select the body parts on the interface, use the preset parameters or change them based on the needs.
- 5) Press the start button on the main page

PMST WAVE

5. Recommended treatment protocols

MT Mode							
Area	Energy	Frequency			Time	Sessions	Interval
		F1	F2	F3			
Elbow	30	7	25	10	15mins	6-8	twice a week
Wrist	30	7	25	10	15mins	6-8	twice a week
Shoulder	50	10	29	13	20mins	6-8	twice a week
Cervical Vertebra	50	7	25	10	20mins	6-8	twice a week
Lumbar Vertebra/	50	9	28	12	20mins	6-8	twice a week
Groin	45	6	22	9	15mins	6-8	twice a week
Hip	60	12	29	15	20mins	6-8	twice a week
Thigh	50	7	25	10	20mins	6-8	twice a week
Knee	55	11	29	13	20mins	6-8	twice a week
Foot/Ankle	40	7	25	10	15mins	6-8	twice a week
ST Mode							
Area	Energy	Frequency			Time	Sessions	Interval
		F1	F2	F3			
Elbow	30	1K	3K	2K	15mins	6-8	twice a week
Wrist	30	1K	3K	2K	15mins	6-8	twice a week
Shoulder	50	1K	3K	2K	20mins	6-8	twice a week
Cervical Vertebra	50	1K	3K	2K	20mins	6-8	twice a week
Lumbar Vertebra/	50	1K	3K	2K	20mins	6-8	twice a week
Groin	45	1K	3K	2K	15mins	6-8	twice a week
Hip	40	1K	3K	2K	20mins	6-8	twice a week
Thigh	45	1K	3K	2K	20mins	6-8	twice a week
Knee	40	1K	3K	2K	20mins	6-8	twice a week
Foot/Ankle	35	1K	3K	2K	15mins	6-8	twice a week

PMST WAVE

6. Maintenance

Change the water every two weeks. The water should be distilled or purified water.

7. Advantages

1) Combined with shallow and deeper penetration

- ◆ MT mode: 1-100Hz for muscle stimulation and contraction
- ◆ ST mode: 1000-3000Hz for rehabilitation and regeneration of bones, tendons, and ligaments.
- ◆ They can be used for musculoskeletal disorders.

2) Combined with shockwave therapy can make treatment more effective

3) Smart and intuitive system

- ◆ Preset parameters for 10 body parts
- ◆ Clear indication on the conditions

4) Hands-free treatment

- ◆ Pain point: Manual work in tecar therapy is labor-consuming for therapists. Sometimes, in the tecar therapy, the therapists need to do manual work for over 25 mins. It is a tired work.
- ◆ In magneto therapy, after applicator is positioned with the flexible holding arm, the therapy can run without the need for the therapist's intervention.

5) Pain-free treatment

- ◆ Magneto can provide customers' non-pain but effective treatment.

6) Touch-free treatment

- ◆ Pain point: In the traditional therapy, customers need to remove their clothes to expose the treatment area. It is not so private, especially for the female.
- ◆ The magnetic pulse can be transferred above the clothes. Customers do not need

PMST WAVE

to take off clothes when taking this therapy. It helps to avoid embarrassment.

Shockwave Therapy

1. Typical indications

- ◆ Sport injuries
- ◆ Tennis elbow
- ◆ Tendonitis
- ◆ Plantar fasciitis
- ◆ Frozen shoulder
- ◆ Achilles tendonitis
- ◆ Erectile dysfunction
- ◆ Fat reduction

2. Things need to notice before the treatment

- ◆ When we start the shockwave handle, we must make sure the treatment head has been installed or the bullet inside the handle will jet out and hurt people.
- ◆ We need to avoid that the shockwave handle start under the situation that the treatment head does not touch anything. Otherwise, the energy will rebound and shorten the lifespan of treatment head and the bullet.
- ◆ The shockwave needs to work with gel, which helps transfer shockwave energy.

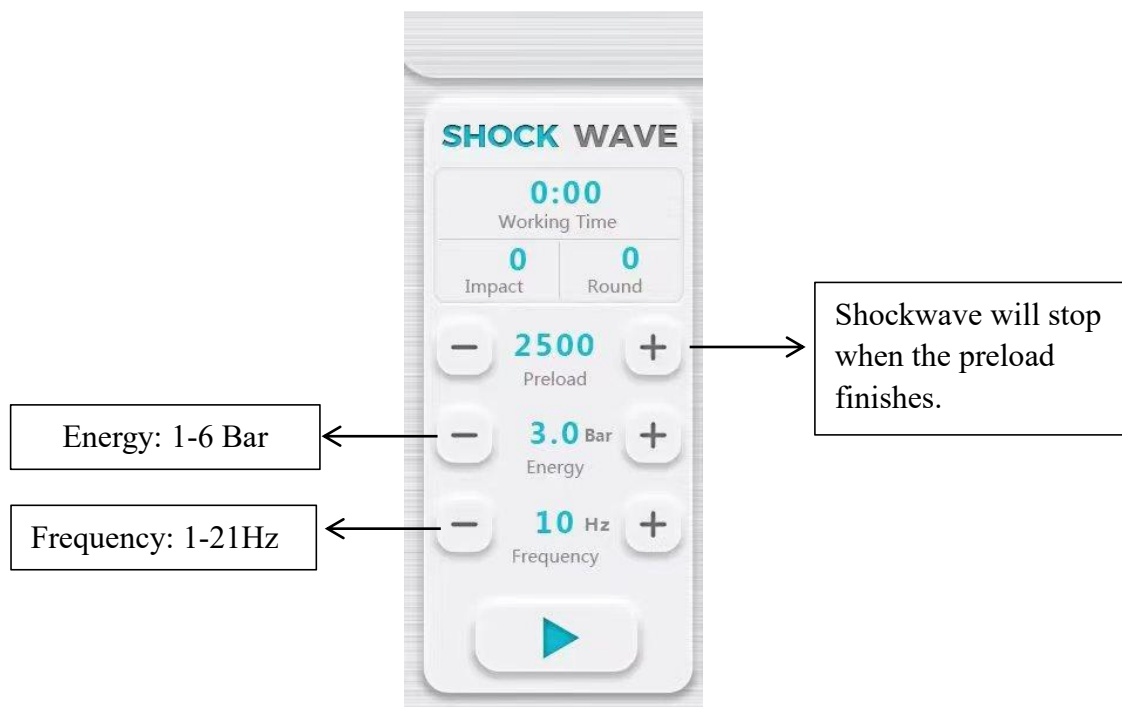
3. Contraindiction

- ◆ Vascular diseases present in or near the treatment area
- ◆ Local infections in the treatment area
- ◆ Around malignant or benign tumours

PMST WAVE

- ◆ Directly on cartilage surfaces or near the small facet joints of the spinal column
- ◆ Directly over implanted electronic devices such as pacemakers, analgesic pumps, etc.
- ◆ In areas, in which mechanical energy in the form of vibrations may lead to tissue damage such as metal implants after a fracture.

4. Operation



- 1) Select the appropriate treatment head according to the size of the treatment area.
(Notice: Before we change the treatment head, we need to stop the machine.)



- 2) Smear gel to the treatment area
- 3) Put the treatment head against treatment area
- 4) Press the “start” button on the main page and press the “start” button on the shockwave handle.

PMST WAVE

5. Recommended treatment protocols

Area	C Mode	Time	Sessions	Interval
Elbow	10HZ/3BAR	2000-2500	5-10	5-7days
Hand/Wrist	6HZ/2BAR	2000	5-10	5-7days
Pubic Symphysis	8HZ/3BAR	2000-2500	5-10	5-7days
Knee	6HZ/2BBAR	2000	5-10	5-7days
Foot/Ankle	8HZ/3BAR	1000	5-10	5-7days
Shoulder	12HZ/4BAR	2000-2500	5-10	5-7days
Lumbar Region	10HZ/4BAR	2000-2500	5-10	5-7days
Fat accumulate	10HZ/4BAR	2000-2500	5-10	5-7days
Hip	12HZ/4BAR	2000-2500	5-10	5-7days
ED	5HZ/1BAR	1500	2-3	twice a week

6. Maintenance

- 1) After the treatment, we need to use towel or tissue to clean the gel on the treatment head.
- 2) If we use the shockwave handle frequently, we need to clean the bullet and the tube every two days. (Please follow the video to clean them).

Infrared Therapy

1. Benefits

- ◆ Promotes wound healing and tissue repair
- ◆ Supports collagen production
- ◆ Reduces swelling and inflammation
- ◆ Improves joint health
- ◆ Improves physical performance
- ◆ Helps sport injury muscle recovery
- ◆ Pain relief with analgesic effect
- ◆ Decreases muscle spasm

PMST WAVE

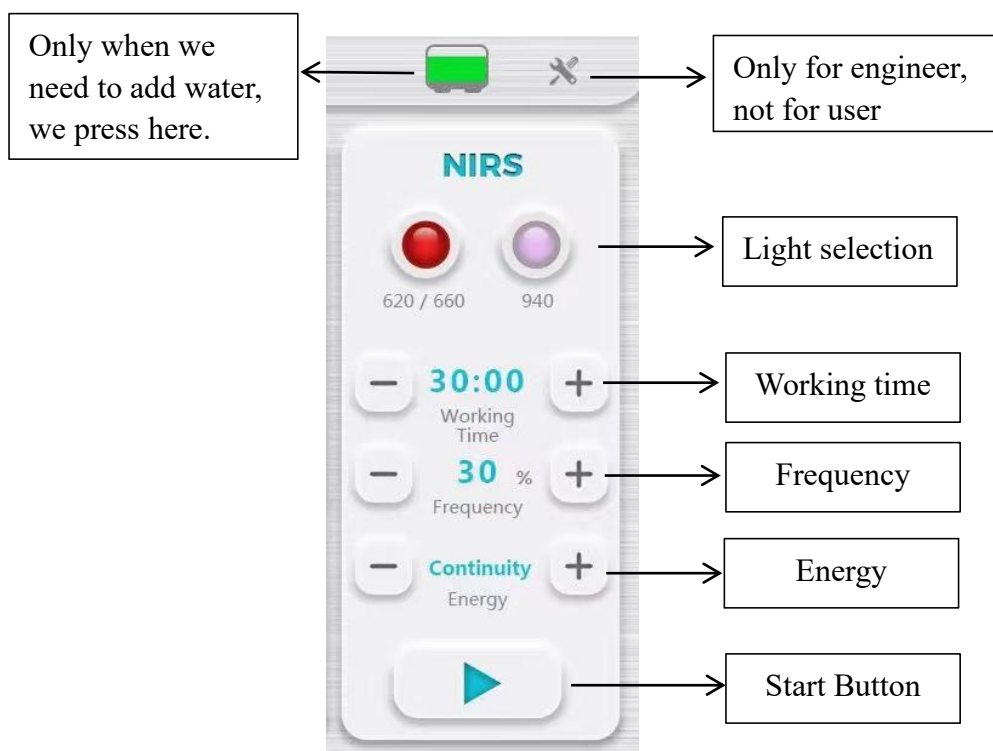
2. Things need to notice before the treatment

The naked eyes cannot directly look at the direction in which the infrared is thrown.

3. Contraindications

- ◆ Impaired cutaneous thermal sensations
- ◆ Defective arterial cutaneous circulation
- ◆ Dermatitis or eczema
- ◆ Tumors
- ◆ Skin damage due to ionizing radiation
- ◆ Tuberculosis
- ◆ Photosensitivity
- ◆ Hyperesthesia
- ◆ Mental retardation
- ◆ Metal implant
- ◆ Fever

4. Operation



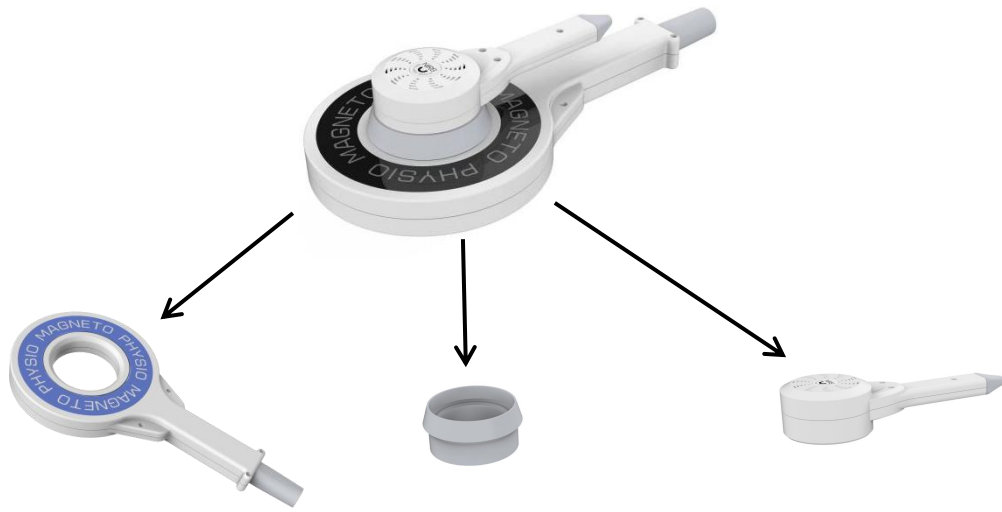
PMST WAVE

- 1) The body part which will takes infrared therapy cannot covered by the clothes.
- 2) The infrared therapy and magneto therapy can work at the same time.

Chapter 4 Technical parameters

PMST WAVE	
Magneto	
Strength at the coil	4T
Frequency in MT mode	1-100Hz
Frequency in ST mode	1000-3000Hz
Intuitive System	Preset parameters for ten body parts
Heat dissipation	Water cooling system
Shockwave	
Energy	1-6Bar
Frequency	1-21Hz
Lifespan of consumable bullet	3 million
NIRS	
Power	3200MW
Wavelength	620nm/660nm/940nm
Machine	
Output power	1200W
Package	Alu box
Package size	108*58*60cm
Gross weight	79KG

Chapter 5 Standard accessories



Magneto handle*1

Silicone case*1

Infrared handle*1



Holding arm*1



Power line*1



Shockwave handle *1



Shockwave treatment heads*6



Shockwave bullet*2



Shockwave tube*2

Notice: 1 bullet and 1 tube have been put into the shockwave handle.